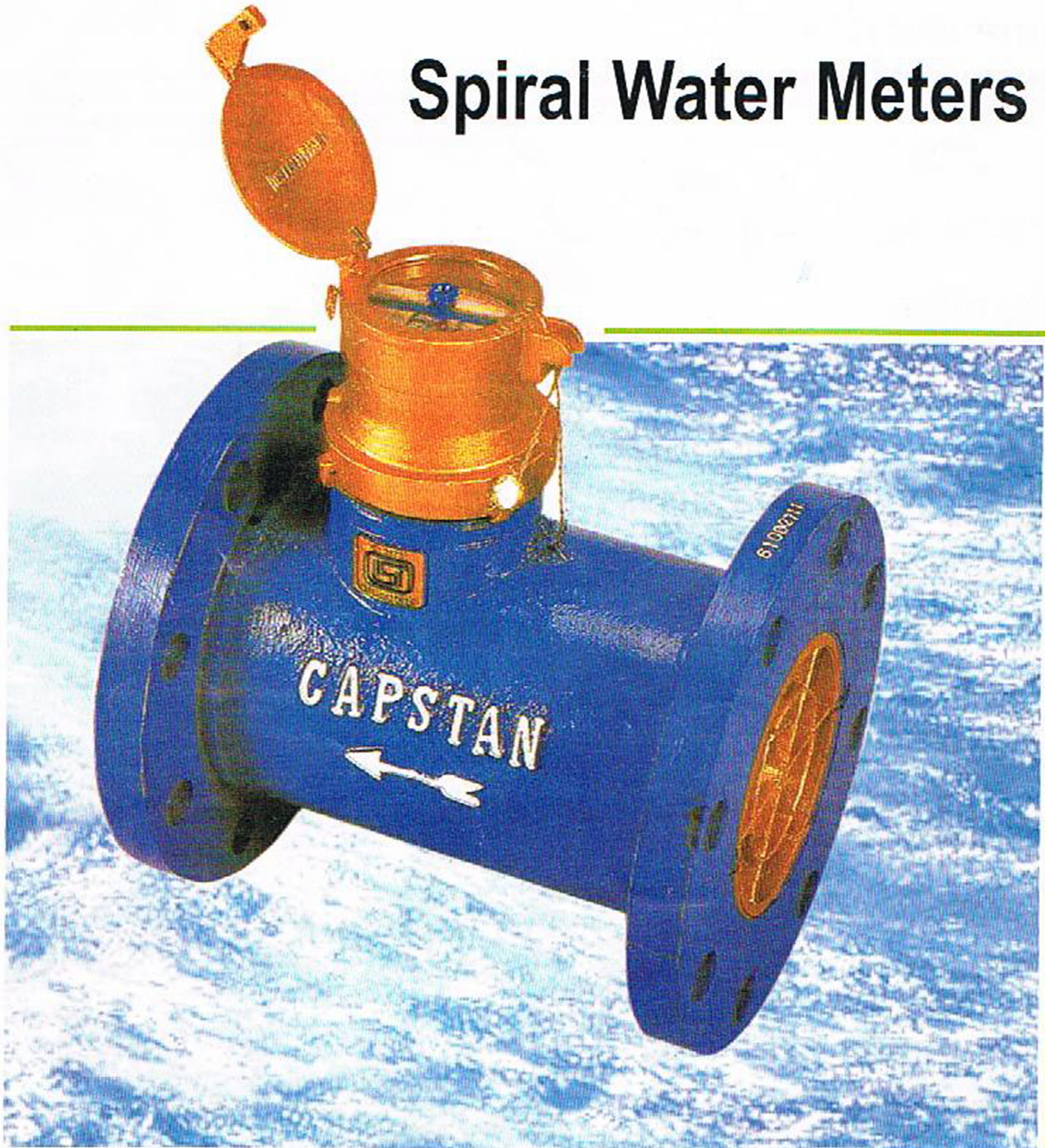


**Capstan**

## Spiral Water Meters



**Capstan** - The Hallmark for quality and modern technology  
AN ISO 9001 : 2000 COMPANY



## INTRODUCTION

**CAPSTAN WATER METERS** are manufactured in all sizes, both Domestic and Bulk type in technical collaboration with the world renowned companies for last five decades. These are designed for durability, accuracy of registration and trouble free service for a number of years. The Factory is equipped with most modern machines and equipments. Meters are manufactured under the skilled supervision of expert foreign trained engineers. The rigid quality control during the various stages of manufacturer in the factory only a top class product entering the market.

All Meters conform to IS 2373

## FEATURES

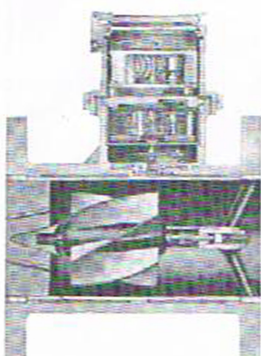
### ENCLOSED TYPE SPIRAL WATER METERS

(Available in sizes 50-mm to 600-mm)

IS-2373 : 1981



L. No. CM/L - 0410625



- Meters upto 100 mm have ISI marking
- Specially designed to meet the demand of reliable meters, capable of measuring large quantities of water, where little loss of head is allowed
- The meter casing is of graded cast iron and houses press fitted non removable liner made of brass
- Tested to withstand a maximum hydrostatic pressure of 16kg/cm<sup>2</sup>
- Suitable for a maximum temperature of 45° C
- High Overload capacity
- Powder coating affords maximum corrosion protection.
- Meters are designed to measure water with **Pipe Full**.

### Installation Requirements

- Unrestricted straight pipe before and after the meter 10 x DIA
  - No abrupt restriction immediately behind the meter.
- Installation of a strainer before the meter is recommended.

### Installation

Pipe	Horizontal	
	oblique	

# Capstan

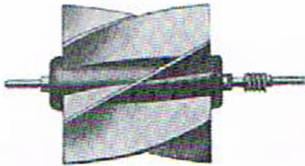
## CONSTRUCTION

### STREAM DIRECTOR



The stream director is of brass and is fitted at the inlet end to correct eddies. This enables the meter to be used in any position i.e. horizontal or oblique.

### SPIRAL IMPELLER ASSEMBLY



Helical shaped impeller is made of special plastic and mounted on solid stainless steel shaft and has a worm gear to transmit the motion. Is self-balanced.

### DIRT BOX

(Available in sizes 50-mm to 600-mm)

Dirt boxes with strainer made of stainless steel can be fitted at the inlet side of the water meters as an additional safeguard and protection of the meter mechanism from unwanted particles, stones etc.





## TECHNICAL DATA

### PERFORMANCE TABLE AS PER IS : 2373

Size of Meter	mm	50	80	100	150	200	250	300	400	450	500	600
Q <sub>max</sub>	Maximum peak flow ±2% m <sup>3</sup> / h	50	125	200	500	800	1100	1500	3000	4000	5000	7000
Q <sub>n</sub>	Nominal Flow ±2% m <sup>3</sup> / h	20	62	100	250	400	550	750	1500	2000	2500	3500
Q <sub>t</sub>	Transitional flow ±2% m <sup>3</sup> / h	1.66	4.16	6.66	16.66	26.66	36.66	50	100	133.33	166.66	233.33
Q <sub>min</sub>	Minimum starting flow ±5% m <sup>3</sup> / h	0.5	1	1.5	3.5	5.5	9	14	25	30	30	45

### DIMENSIONS

Size of Meter	50	80	100	150	200	250	300	400	450	500	600
Overall Length in mm	200	200	250	300	350	450	500	560	710	800	815
Height 'h' mm	82.5	100	110	142.5	170	197.5	222.5	282.5	307.5	335	390
Height 'H' mm	150	170	185	205	235	235	310	350	350	400	400
Weight in KG	10	16	21	35	60	79	122	250	345	410	590

Flanges drilled as per IS:1538 unless otherwise specified

